

Natural changes of population 1961 – 2022

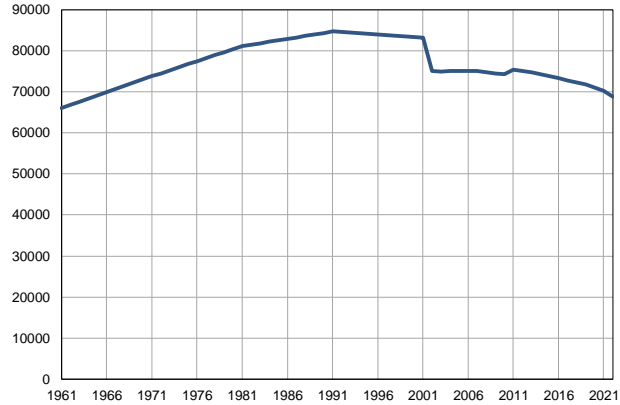
Profile
July 2023

City of Požarevac

	1961	2022
Population size	66047	68871
Livebirths, Number	960	628
Deaths, Number	607	1234
Natural increase, Number	353	-606
Infants deaths, Number	48	0
Livebirths, per 1,000 population	15	9
Deaths, per 1,000 population	9	18
Natural increase, per 1,000 population	5	-9
Infants deaths, per 1,000 livebirths	50	0

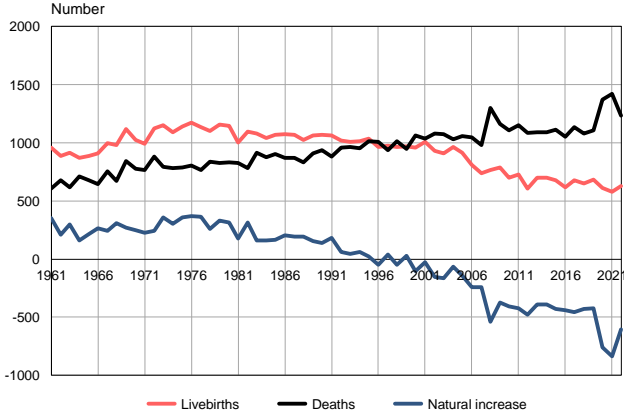
Source: Vital Statistics, SORS

Population size, 1961–2022



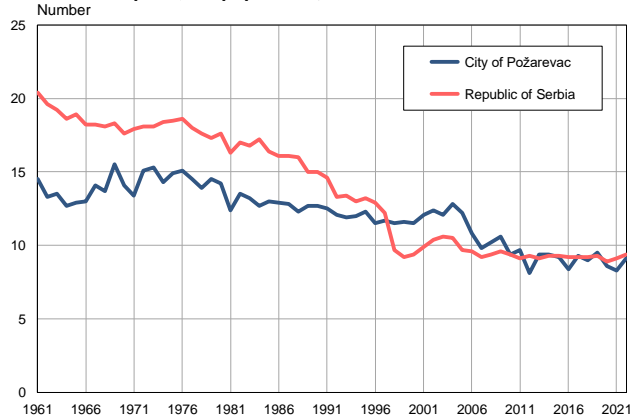
Source: Vital Statistics, SORS

Livebirths, deaths and natural increase, 1961–2022



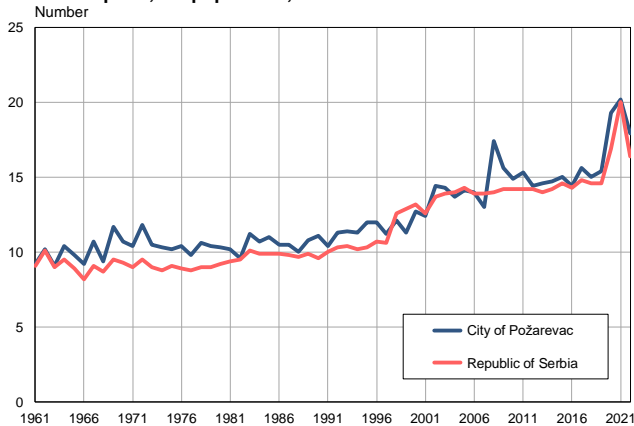
Source: Vital Statistics, SORS

Livebirths per 1,000 population, 1961–2022



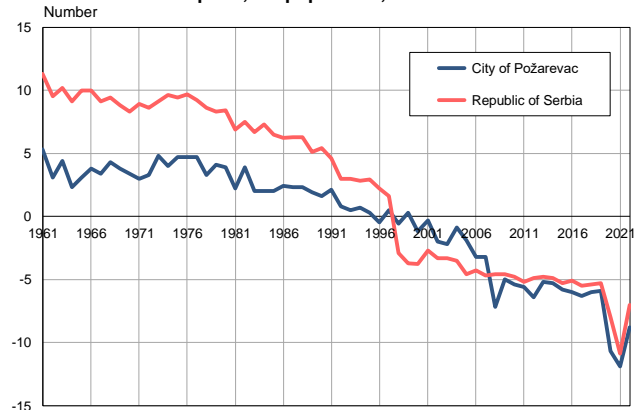
Source: Vital Statistics, SORS

Deaths per 1,000 population, 1961–2022



Source: Vital Statistics, SORS

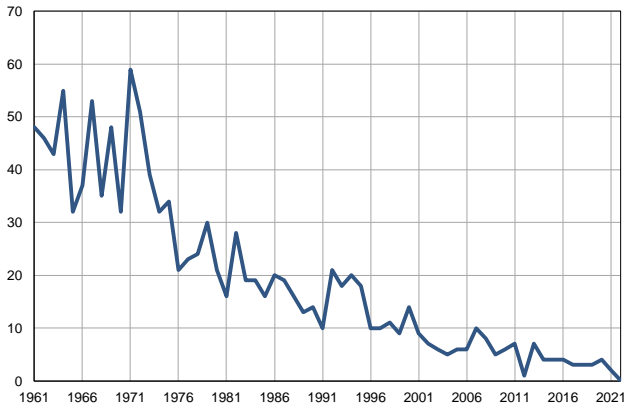
Natural increase per 1,000 population, 1961–2022



Source: Vital Statistics, SORS

Infants deaths, 1961–2022

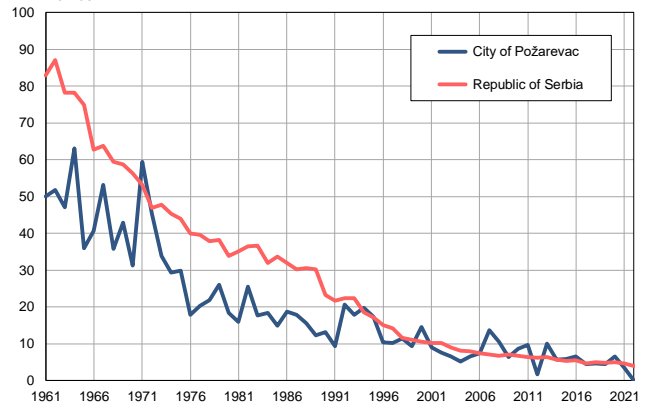
Number



Source: Vital Statistics, SORS

Infants deaths per 1,000 livebirths, 1961–2022

Number



Source: Vital Statistics, SORS

Table. Natural changes of population, City of Požarevac

Year	Number of population	Livebirths	Deaths	Natural increase	Infants deaths	per 1000 population			Infant deaths per 1000 livebirths
						Livebirths	Deaths	Natural increase	
1961	66047	960	607	353	48	14.5	9.2	5.3	50.0
1962	66819	888	680	208	46	13.3	10.2	3.1	51.8
1963	67591	915	616	299	43	13.5	9.1	4.4	47.0
1964	68363	871	712	159	55	12.7	10.4	2.3	63.1
1965	69135	889	676	213	32	12.9	9.8	3.1	36.0
1966	69908	908	644	264	37	13.0	9.2	3.8	40.7
1967	70680	999	756	243	53	14.1	10.7	3.4	53.1
1968	71452	978	670	308	35	13.7	9.4	4.3	35.8
1969	72224	1118	845	273	48	15.5	11.7	3.8	42.9
1970	72996	1027	779	248	32	14.1	10.7	3.4	31.2
1971	73768	992	767	225	59	13.4	10.4	3.0	59.5
1972	74504	1125	881	244	51	15.1	11.8	3.3	45.3
1973	75239	1152	791	361	39	15.3	10.5	4.8	33.9
1974	75975	1088	785	303	32	14.3	10.3	4.0	29.4
1975	76710	1142	786	356	34	14.9	10.2	4.7	29.8
1976	77446	1171	802	369	21	15.1	10.4	4.7	17.9
1977	78181	1132	767	365	23	14.5	9.8	4.7	20.3
1978	78917	1099	838	261	24	13.9	10.6	3.3	21.8
1979	79652	1156	827	329	30	14.5	10.4	4.1	26.0
1980	80388	1145	830	315	21	14.2	10.3	3.9	18.3
1981	81123	1002	827	175	16	12.4	10.2	2.2	16.0
1982	81479	1097	784	313	28	13.5	9.6	3.9	25.5
1983	81834	1077	917	160	19	13.2	11.2	2.0	17.6
1984	82190	1041	878	163	19	12.7	10.7	2.0	18.3
1985	82545	1071	904	167	16	13.0	11.0	2.0	14.9
1986	82901	1072	870	202	20	12.9	10.5	2.4	18.7
1987	83256	1067	873	194	19	12.8	10.5	2.3	17.8
1988	83612	1027	832	195	16	12.3	10.0	2.3	15.6
1989	83967	1065	910	155	13	12.7	10.8	1.9	12.2
1990	84323	1071	935	136	14	12.7	11.1	1.6	13.1
1991	84678	1062	882	180	10	12.5	10.4	2.1	9.4
1992	84534	1019	958	61	21	12.1	11.3	0.8	20.6
1993	84391	1006	962	44	18	11.9	11.4	0.5	17.9
1994	84247	1015	954	61	20	12.0	11.3	0.7	19.7
1995	84103	1037	1013	24	18	12.3	12.0	0.3	17.4
1996	83960	962	1010	-48	10	11.5	12.0	-0.5	10.4
1997	83816	977	936	41	10	11.7	11.2	0.5	10.2
1998	83672	966	1013	-47	11	11.5	12.1	-0.6	11.4
1999	83528	972	945	27	9	11.6	11.3	0.3	9.3
2000	83384	958	1063	-105	14	11.5	12.7	-1.2	14.6
2001	83241	1009	1034	-25	9	12.1	12.4	-0.3	8.9
2002	74994	930	1081	-151	7	12.4	14.4	-2.0	7.5
2003	74937	909	1074	-165	6	12.1	14.3	-2.2	6.6
2004	75021	963	1028	-65	5	12.8	13.7	-0.9	5.2
2005	75126	916	1058	-142	6	12.2	14.1	-1.9	6.6

Table. Natural changes of population, City of Požarevac

Year	Number of population	Livebirths	Deaths	Natural increase	Infants deaths	per 1000 population			Infant deaths per 1000 livebirths
						Livebirths	Deaths	Natural increase	
2006	75118	808	1049	-241	6	10.8	14.0	-3.2	7.4
2007	75059	738	978	-240	10	9.8	13.0	-3.2	13.6
2008	74805	764	1300	-536	8	10.2	17.4	-7.2	10.5
2009	74463	789	1162	-373	5	10.6	15.6	-5.0	6.3
2010	74225	701	1105	-404	6	9.4	14.9	-5.4	8.6
2011	75362	728	1153	-425	7	9.7	15.3	-5.6	9.6
2012	75054	605	1084	-479	1	8.1	14.4	-6.4	1.7
2013	74713	702	1091	-389	7	9.4	14.6	-5.2	10.0
2014	74328	699	1091	-392	4	9.4	14.7	-5.3	5.7
2015	73861	680	1111	-431	4	9.2	15.0	-5.8	5.9
2016	73320	617	1054	-437	4	8.4	14.4	-6.0	6.5
2017	72768	680	1135	-455	3	9.3	15.6	-6.3	4.4
2018	72272	651	1082	-431	3	9.0	15.0	-6.0	4.6
2019	71746	683	1107	-424	3	9.5	15.4	-5.9	4.4
2020	71026	612	1370	-758	4	8.6	19.3	-10.7	6.5
2021	70168	581	1419	-838	2	8.3	20.2	-11.9	3.4
2022	68871	628	1234	-606	0	9.1	17.9	-8.8	0.0

Source: Vital Statistics, SORS

Definitions

Population size

Number of population in the respective year. The data on the number of population in 1961, 1971, 1981 and 1991 are census data, while for the inter-census years the number of population was calculated as an average inter-census difference. From 2002 are given the population estimates that were calculated according to the census of population results and the annual statistics of natural mechanical population movements.

Livebirths

Absolute number of live births in the course of a year. Live born child means a child giving vital signs after birth (breathing, i.e. heartbeat), even for the shortest time, regardless the mother's pregnancy duration.

Deaths

Absolute number of deaths in the course of a year. Deceased is a person that whenever after having been born live, shows permanently stopped vital signs.

Natural increase

Natural population increase is the number of live births minus the number of deaths.

Infants deaths

Absolute number of infants deaths in the course of a year. Deceased infant is a child that after having been born live and before aged one year, shows permanently stopped vital signs.

Livebirths, per 1 000 population

Livebirths rate is the ratio of the number of live births and the population size in the respective year. The number of live births is divided by the population size and then multiplied by 1000.

Deaths, per 1 000 population

General mortality rate represents the ratio between the number of deaths and the population size in the respective year. The number of deaths is divided by population size and then multiplied by 1000.

Natural increase, per 1 000 population

Natural population increase rate is the difference between the number of live births and the number of deaths, in relation to the population size in the respective year.

Natural population increase rate = (number of live births - number of deaths) / population size * 1000

Infants deaths, per 1 000 livebirths

Infant mortality rate is the ratio of deceased children under 1 year of age and live births in the respective year. The mortality rate is expressed per 1000 live births.

Infant mortality rate = (number of deceased children under 1 year of age / number of live births) * 1000

Additional info:



Download all database data in Excel format:

[Data](#)



DevInfo profiles:

devinfo.stat.gov.rs/SerbiaProfileLauncher/?lang=en



DevInfo online database:

devinfo.stat.gov.rs/vitalna



For additional information or questions please contact:

devinfo@stat.gov.rs